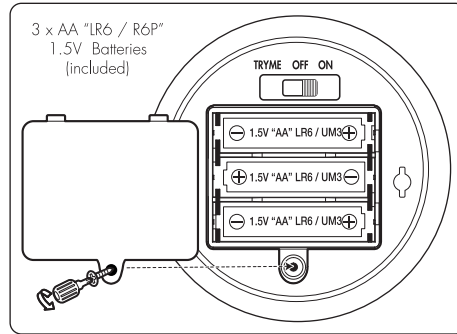


Battery Replacement

NOTE: Make sure the main power button is set to OFF prior to changing the batteries. Ask a parent or adult for help. To install or change your Magical Fairy Finder batteries:

1. Lay Magical Fairy Finder down so that the battery compartment faces upwards. Magical Fairy Finder requires 3 x AA "LR6 / R6P" 1.5V batteries (included).
2. Use a Phillips screwdriver (not included) to remove the screw on the battery compartment door.
3. Remove any existing batteries and insert new batteries according to the diagram. Ensure that the positive and negative polarities match the illustrations inside the battery compartment.
4. Replace the battery compartment door and replace the screw using the screwdriver. Do not over-tighten.



Battery Diagram/Installation

Important Information

IMPORTANT BATTERY INFORMATION:

- Use only fresh batteries of the required size and recommended type.
- Do not mix old and new batteries, different types of batteries [standard (Carbon-Zinc, Alkaline or rechargeable)] or rechargeable batteries of different capacities.
- Remove rechargeable batteries from the toy before recharging them.
- Rechargeable batteries are only to be charged under adult supervision.
- Please respect the correct polarity, (+) and (-).
- Do not try to recharge non-rechargeable batteries.
- Do not dispose of batteries into fire.
- Replace all batteries of the same type/brand at the same time.
- The supply terminals are not to be short-circuited.
- Remove exhausted batteries from the toy.
- Batteries should be replaced by adults.
- Batteries should be recycled or disposed of as per state and local guidelines.
- Protect the environment by not disposing of this product with household waste. Check your local authority for recycling advice and facilities.



Manufactured and distributed by WowWee Group Limited. Product names, designations and logos are trademarks of WowWee Group Limited. Copyright 2020 WowWee Group Limited. All rights reserved. Patent Pending.

Customer Service Website: <https://support.wowwee.com>

We recommend that you retain our address for future reference.

Product and colors may vary.

Packaging printed in China.

CAN ICES-003(B)/NMB-003(B)

MADE IN CHINA

CAUTION

Changes or modifications not expressly approved by the party responsible for compliance could void the user's authority to operate the equipment.

NOTE

This equipment has been tested and found to comply with the limits for a class B digital device, pursuant to part 15 of the FCC rules. These limits are designed to provide reasonable protection against harmful interference in a residential installation. This equipment generates, uses and can radiate radio frequency energy and, if not installed and used in accordance with the instructions, may cause harmful interference to radio communications.

However, there is no guarantee that interference will not occur in a particular installation. If this equipment does cause harmful interference to radio or television reception, which can be determined by turning the equipment off and on, the user is encouraged to try and correct the interference by one or more of the following measures:

- Reorient or relocate the receiving antenna.
- Increase the separation between the equipment and receiver.
- Connect the equipment into an outlet on a circuit different from that to which the receiver is connected.
- Consult the dealer or experienced radio/TV technician for help.

This Device complies with Part 15 of the FCC Rules. Operation is subject to the following two conditions: (1) This device may not cause harmful interference, and (2) This device must accept any interference received, including interference that may cause undesired operation.

Carrier frequency: 0.128603 MHz, Field strength: 5.3 dBuA/m at 3 m
This device contains licence-exempt transmitter(s)/receiver(s) that comply with Innovation, Science and Economic Development Canada's licence-exempt RSS(s). Operation is subject to the following two conditions:

1. This device may not cause interference.
2. This device must accept any interference, including interference that may cause undesired operation of the device.

For these purposes, the party responsible is:

WowWee USA Inc.
7855 Fay Avenue, Suite 310, La Jolla, CA, USA 92037
1-800-310-3033

For full list of inputs, please visit <http://wowwee.com>

For warranty information, please visit <http://wowwee.com/information/warranty>

WARNING! This equipment may experience difficulty and/or memory loss when subjected to any electrostatic discharge, radio frequency interference, or sudden power surge/interruption. The user is encouraged to reset the equipment should any of these occur.



4950US02SUN_MIM

ITEM NO: 4950

Age: 5+



Manufactured and distributed by
© 2020 WowWee Group Limited.
All Rights Reserved. Patent Pending.

WowWee Group Limited.
Energy Plaza, 301A-C
92 Granville Road
T.S.T. East, Hong Kong

WowWee Canada Inc.
3700 Saint Patrick Street
Suite 206, Montreal, QC
H4E 1A2, Canada

Customer Service

More information on: <https://support.wowwee.com>

USER MANUAL

Introduction

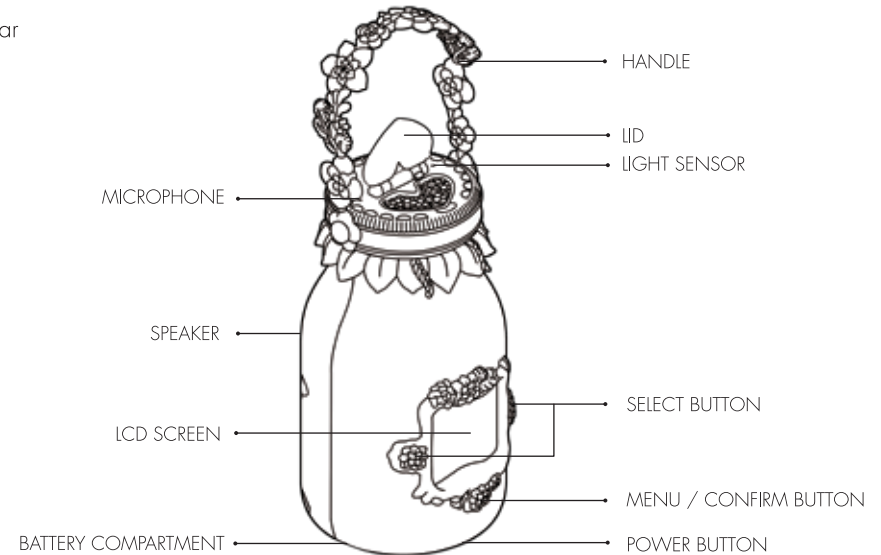
Catch the magic glow!

With this magical Got2Glow Fairy Finder the wonderful world of fairies is now at your fingertips. There are fairies all around us, how many will you find? From upside down to glow in the dark, common to legendary, there are over 30+ unique fairies to find in THIS jar and over 100 fairies to find in total! The more you play with your jar the more fairies you will catch. You can play, feed, and say hello to every fairy you have found! You can also share fairies with friends to grow your collections. Open your Fairy Finder lid and see who flies in!

Contents

Includes:

1x Fairy Jar



Important Information

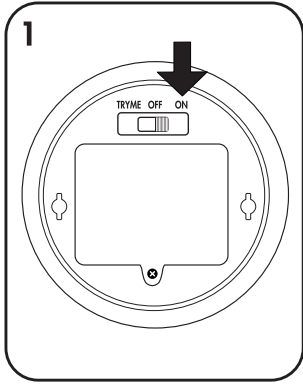
TAKE NOTE OF THE FOLLOWING WHEN PLAYING WITH MAGICAL FAIRY FINDER

- To avoid discomfort or injury, do not place Magical Fairy Finder on or near a person's head or face.
- Do not immerse Magical Fairy Finder or any of its parts in water or any other form of liquid.
- If your Magical Fairy Finder gets dirty, you can spot clean with a clean cloth; do not submerge.
- Do not use chemical or abrasive cleaners.
- Do not drop, throw, or kick Magical Fairy Finder as this may damage mechanical functions.
- Do not leave Magical Fairy Finder unattended near edges from which it could fall.

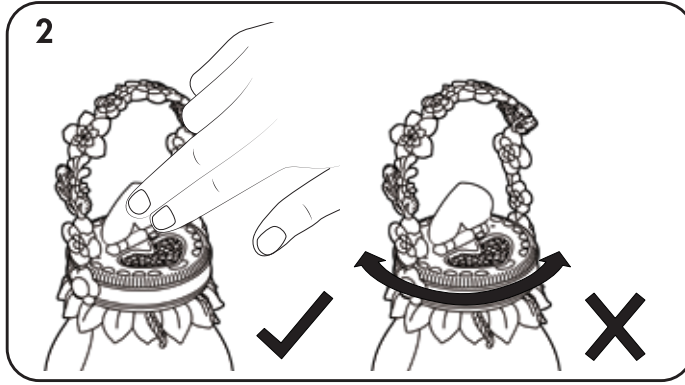


How To Play

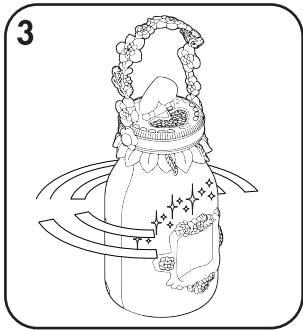
Catch a fairy!



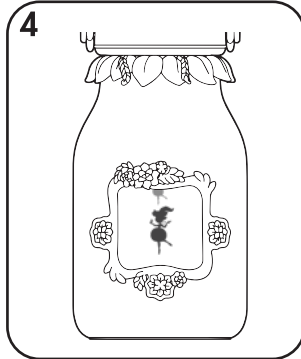
POWER ON THE FAIRY JAR



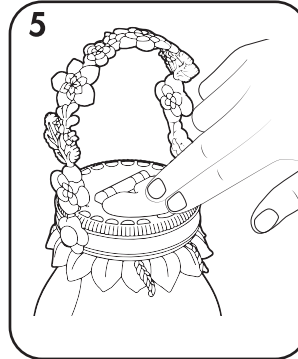
OPEN THE HEART SHAPED DOOR *DO NOT TWIST THE LID*



WITH THE HEART SHAPED DOOR OPEN, LIGHTS AND SOUND SHOULD APPEAR. THIS MEANS THE JAR IS SEARCHING FOR A FAIRY!

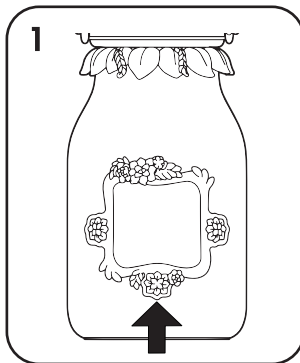


JAR LIGHTS UP AS A FAIRY FLIES IN

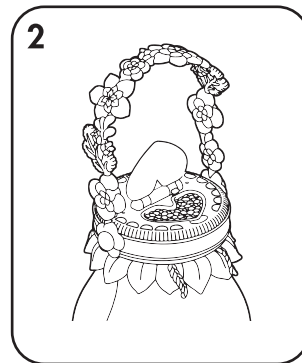


CLOSE THE HEART SHAPED DOOR AND THE FAIRY WILL MAKE THE JAR HOME

WANT TO CATCH ANOTHER FAIRY?



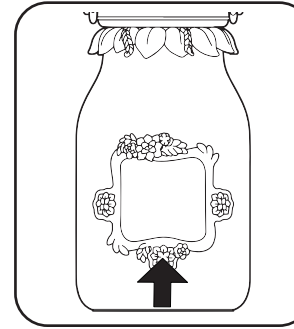
DOUBLE PRESS TO LAUNCH FAIRY FINDER MODE



LEAVE THE HEART SHAPED DOOR OPEN AND WAIT FOR ANOTHER FAIRY TO FLY IN

How To Play: Continued

Interact with your Fairy Finder!



HOLD TO ENTER / EXIT MENU

PRESS AND HOLD THE MENU BUTTON TO LAUNCH MENU

TOGGLE THROUGH MENU USING BUTTONS ON THE LEFT & RIGHT OF THE SCREEN. PRESS THE MENU BUTTON TO ENTER YOUR DESIRED MODE. HOLD DOWN MENU BUTTON TO RETURN TO FAIRY MODE



COLLECTION MODE
SEE ALL THE FAIRIES YOU HAVE FOUND AND CALL THEM BACK TO HANG OUT IN THE JAR



FAIRY FINDER MODE
FIND ANOTHER FAIRY!



GAME MODE
PLAY GAMES WITH YOUR FAIRY!



TRADING MODE
TRADE FAIRIES WITH FRIENDS



SETTINGS
ADJUST SCREEN BRIGHTNESS AND AUDIO VOLUME



HELP

PRESS ONCE FOR FAIRY REACTION
HOLD DOWN = FAIRY FLIES LEFT



PRESS ONCE FOR FAIRY REACTION
HOLD DOWN = FAIRY FLIES RIGHT



PRESS ONCE AT SAME TIME FOR SIGNATURE REACTIONS
HOLD DOWN AT SAME TIME = GIVE YOUR FAIRY A HUG!



HOLD DOWN: ENTER MENU!
PRESS ONCE TO FEED YOUR FAIRY
PRESS TWICE TO LAUNCH SEARCH MODE TO CATCH A FAIRY!



ASK YOUR PARENTS BEFORE GOING ONLINE! SCAN HERE TO LEARN MORE ABOUT HOW TO CATCH A FAIRY & PLAY!



LEARN MORE ABOUT YOUR FAIRIES BY SCANNING THEM ON FAIRY FINDER SCREEN IN THE FIND MY FAIRY APP. ASK YOUR PARENTS BEFORE DOWNLOADING!



YOU CAN ALSO VISIT WWW.GOT2GLOWFAIRIES.COM FOR MORE INFO