

Hi, I'm Dog-E. The one in a million robot dog, MINTiD just for you! When you mint me, I reveal a unique combination of colorful lights, sounds and personality, so I'm totally unique to you! Follow along to learn all about how to care for me, play with me, teach me tricks and more!



USB Type-C Charging Cable (A/C adapter not included)



ONE IN A MILLION
Dog-E reveals a one in a million combination of colorful lights. Also, each Dog-E comes with a random combination of features that make it totally unique to you!

1 of 6 Eye Shapes

Black, White or Combo Ears

1 of 4 Ear Positions

1 of 3 Tongue Colors

1 of 4 Collar Colors

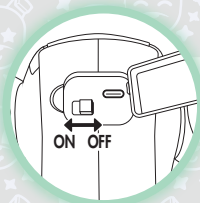
1 of 4 Collar Tag Shapes and Colors

1 of 4 Bone Toy Colors

All of Dog-E's physical features and product colors are random and cannot be changed.

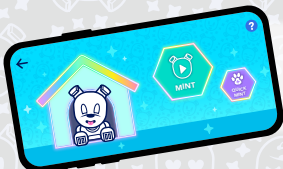


1
Cut strap on ears.

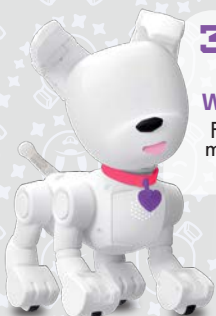


2
Turn Switch to On.

MINT YOUR DOG-E
Reveal a unique combination of colorful lights, sounds and personality traits.



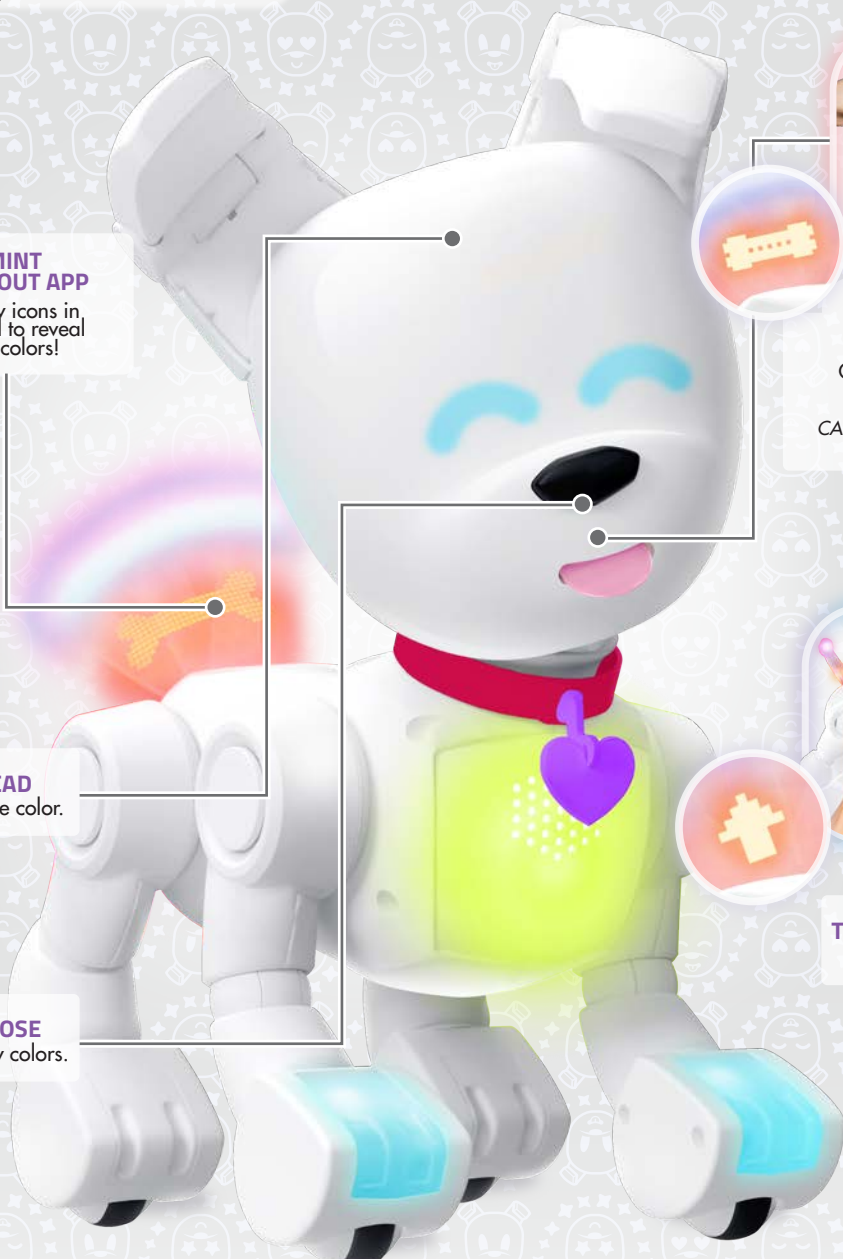
USING APP?
Follow instructions in your app to connect and mint your Dog-E



3
MINT WITHOUT APP
Follow icons in my tail to reveal my colors!



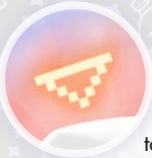
6
PLAY WITH TOY
Connect magnetic toy to mouth to reveal tail color.
CAUTION: Dog-E will run forward with toy. Place on floor to play.



4
PET HEAD
to reveal eye color.



7
TOUCH BOTH SIDES AND LIFT
to reveal bark and heart color.



5
PRESS NOSE
to reveal paw colors.

SCAN FOR MORE INFORMATION
How To Play Video

DOG-E'S TAIL GUIDES THE WAY

	PET ME		PLAY WITH MY TOY
	LIFT ME UP		PRESS MY NOSE

NOTE: Dog-E's eye shapes, ear colors and ear position will vary. Collar, tag and bone colors will vary. Tag shapes will vary.



CARE FOR DOG-E

Dog-E's tail tells you what it needs! Watch the tail, then use the guide below to keep Dog-E happy.

WHAT DOES DOG-E WANT?



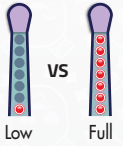
PRESS NOSE TWICE
I show my name.



CHECK MY NEEDS
Touch left or right side to switch needs.



FOLLOW THE TAIL
Icons in tail show needs.



BEGGING
I make a begging sound and show an icon in my tail when I need something.



USE THE APP
Also check my needs and care for me in the app!



FEED
Press my nose once to feed me when I'm hungry. I make eating and slurping sounds.



POOP
When I need to go, I poop and pee on my own. Hear the silly sounds and see icon in my tail.

LOVE
Pet my head in the center front between my ears when I need love. I make sweet loving sounds.



HEALTH
When my lights turn green and yellow, I'm sick! Press my nose or pet my head to make me feel better.



PLAY GAMES
Press my ear down to go to Game Menu.



GIVE DOG-E A KISS
Pick me up while touching both sides, then press my nose.

PLAY WITH MY TOY
Pull to walk or play tug of war! I run forward with my magnetic toy. Play on floor, so I don't fall. Pet head while playing with toy to make me run continuously.





- 1** Press ear down to enter Game Menu.
- 2** Touch sides to switch through games.
- 3** Press nose to select game.
- 4** Touch both sides and lift to exit any game.
- OR** Access games using the app!

FORTUNE TELLER



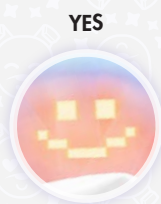
Let me take you bark 2 to the future! Ask me a yes or no question, and I will reveal what your future holds.



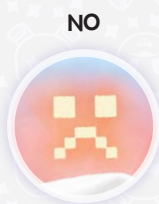
I will bark, telling you to ask a question.



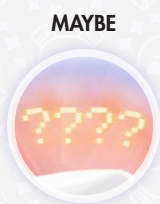
Ask me a yes or no question, then pet my head.



YES



NO



MAYBE

I will reveal the answer in my tail and with sounds.

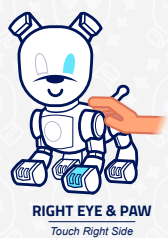
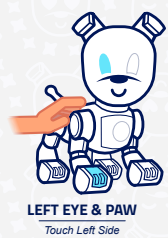
CODE BREAKER



I have a secret mission for you, all you need is the code! Follow the pattern to crack the code!



I use lights and sounds to show a pattern. Use the key to know where to touch. Every round, the pattern gets longer. How long of a code can you break?



ULTIMATE NOSE BOOP



How fast is your nose boop? Press my nose as many times as you can in 10 seconds!



I turn red as I count down to start. When I turn green at the end of the countdown GO!



Press my nose as fast as you can for 10 seconds! My tail will light up, showing your progress!



1 Press ear down to enter Game Menu.



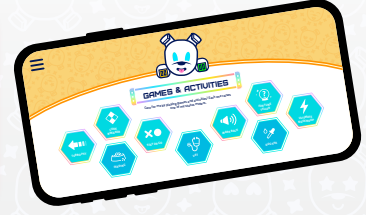
2 Touch sides to switch through games.



3 Press nose to select game.



4 Touch both sides and lift to exit any game.



OR Access games using the app!

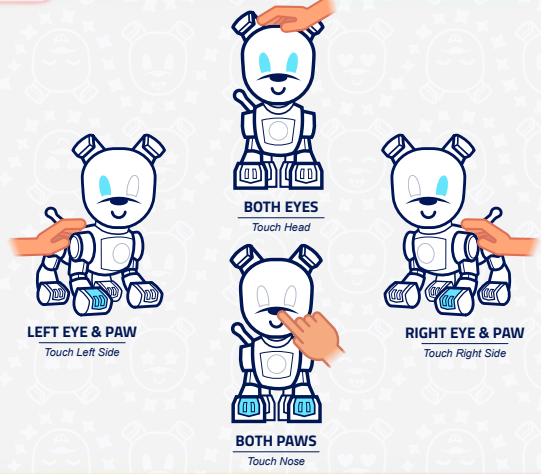
TURBO PET



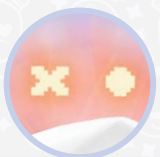
It's a race to get the most scratches! Pet as fast as you can! The longer you play, the harder it gets!



I use lights and sounds to show where I want you to pet. Using the key, touch sensors as fast as you can. The longer you play, the faster you have to be!



STAY OR GO



Like red light, green light, I'm taking you to puppy school and training you to stay or go.

Play with friends!
Set me down and press my nose to start. Then move at least 20 ft away. I will countdown, then you can GO!



STAY: Freeze in place! Don't move!



GO: Run toward Dog-E!



First to pet my head when I'm green wins!

iBARK BACK



In this mode, whenever you talk or make a sound, I bark back. Play a repeat game and hear me respond to you, or hide me somewhere to prank your friends!



Wait for my growl at the start of the game. Then, say something short, medium or long in length, and I bark back.



PET HEAD or PRESS NOSE to exit iBark Back.
After 5 mins without input, I will go to sleep.

PRANK MODE

Set me up to prank your friends! Hide me, so I bark when your friend comes in and makes any sound.

SAVE MULTIPLE PROFILES

Dog-E can save up to 10 profiles, so you can mint multiple unique Dog-Es.



PROFILE MENU

Press nose for 2 seconds.



MINT A NEW DOG-E

On all white lights, press nose.



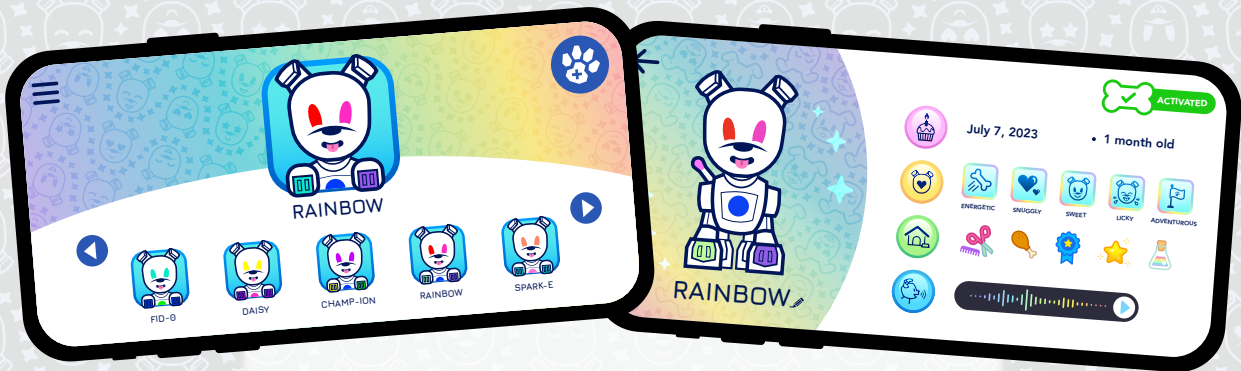
CHANGE PROFILE

Touch left or right side to switch through saved profiles. Press nose to confirm.



ERASE A PROFILE

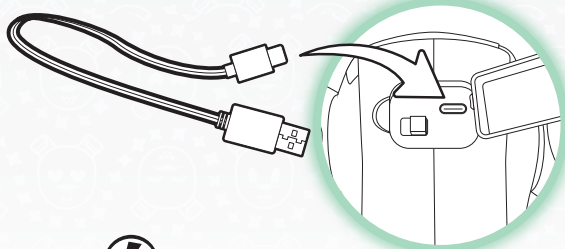
Lights flash red and warning sound plays when I need to erase a profile in order to mint a new one. Hold nose button 3 seconds to erase the least-used profile.



YOU CAN ALSO SWITCH PROFILES AND SEE YOUR SAVED PROFILES IN THE DOG-E APP.

CHARGE BATTERY

* Keep OFF when charging



DC IN 5.0V 1.5A

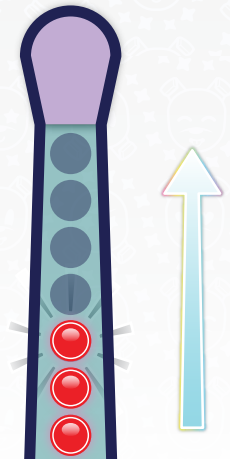
The Dog-E™ is operated by 1 x 3.7V 2000 mAh Lithium-ion rechargeable battery. (included)



CHARGE TIME:
Approximately 75 MINUTES

LED INDICATORS

Flashing = CHARGING
Lights off = FULLY CHARGED



DOWNLOAD THE DOG-E APP FOR MORE WAYS TO PLAY



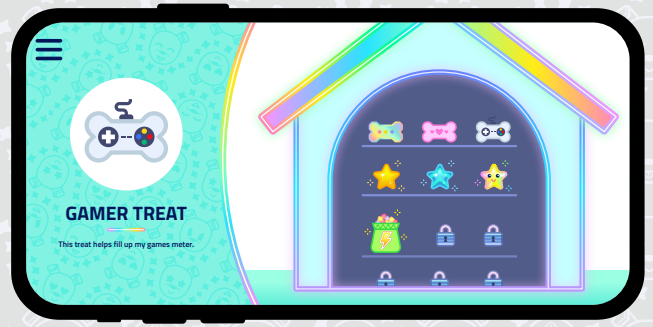
MINT A NEW DOG & TAKE THE PERSONALITY QUIZ



TRACK MY NEEDS



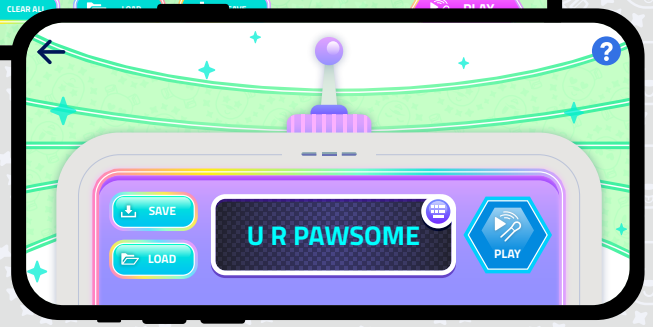
FEED ME TREATS



EARN REWARDS



TEACH ME TRICKS



DRAW AND WRITE MESSAGES IN MY TAIL

WowWee™ 90-Day Limited Warranty

WowWee's warranty obligations for Dog-E™ (this "Product") are limited to the terms set forth below.

WowWee Group Limited ("WowWee") warrants to the original end-user purchaser that this Product will be free from defects in materials and workmanship under normal use for a period of 90 days from the date of retail purchase (the "Warranty Period"). This warranty is extended only to the original end-user purchaser of a new product that was not sold "as is".

If a defect arises:

(1) you may within 30 days from the date of retail purchase (or such other period specified by the return policies of the place of purchase) return this Product to the place of purchase, together with the original proof of purchase and either the original box or the UPC code label from the box, and this Product will be replaced or, in the event that a replacement for this Product is not available at the place of purchase, either a refund of the purchase price for this Product or a store credit of equivalent retail value will be provided; or

(2) you may after the day that is 30 days from the date of retail purchase (or such other period specified by the return policies of the place of purchase) and within the Warranty Period contact WowWee Customer Support to arrange for the replacement of this Product.

In the event that a replacement for this Product is not available this Product will be replaced by WowWee with a product of equivalent or greater retail value.

Notwithstanding the foregoing terms of this warranty, WowWee reserves the right at all times, at its sole option and discretion, to refund to you the purchase price paid by you for this Product in full and final settlement of WowWee's obligations under this warranty.

A purchase receipt or other proof of the date of retail purchase and purchase price is required in order to claim the benefit of this warranty.

If this Product is replaced, the replacement product becomes your property and the replaced Product becomes WowWee's property. If the place of purchase refunds the purchase price of this Product or issues a store credit of equivalent retail value, this Product must be returned to the place of purchase and becomes WowWee's property. If WowWee refunds the purchase price of this Product, this Product must be returned to WowWee and becomes WowWee's property.

EXCLUSIONS AND LIMITATIONS

This warranty covers the normal and intended use of this Product. This warranty does not apply: (a) to damage caused by accident, abuse, unreasonable use, improper handling and care or other external causes not arising out of defects in materials or workmanship; (b) to damage caused by service performed by anyone who is not an authorized representative of WowWee; (c) to any hardware, software or other add-on components installed by the end-user; (d) if this Product has been disassembled or modified in any way; (e) to cosmetic damage, including but not limited to scratches, dents or broken plastic, or normal wear and tear.

THIS WARRANTY GIVES YOU SPECIFIC LEGAL RIGHTS AND YOU MIGHT ALSO HAVE OTHER RIGHTS THAT VARY FROM STATE TO STATE. WOWWEE'S RESPONSIBILITY FOR PRODUCT DEFECTS IS LIMITED TO THE REPLACEMENT OF THIS PRODUCT OR THE REFUND OF THE PURCHASE PRICE FOR THIS PRODUCT. ALL EXPRESS AND IMPLIED WARRANTIES, INCLUDING BUT NOT LIMITED TO ANY IMPLIED WARRANTIES AND CONDITIONS OF MERCHANTABILITY AND FITNESS FOR A PARTICULAR PURPOSE, ARE LIMITED IN TIME TO THE TERM OF THIS LIMITED WARRANTY. NO WARRANTIES, WHETHER EXPRESS OR IMPLIED, WILL APPLY AFTER THE EXPIRATION OF THE LIMITED WARRANTY PERIOD. If any term of this warranty is held to be illegal or unenforceable, the legality or enforceability of the remaining terms shall not be affected or impaired.

EXCEPT AS PROVIDED IN THIS WARRANTY AND TO THE EXTENT PERMITTED BY LAW, WOWWEE IS NOT RESPONSIBLE FOR DIRECT, SPECIAL, INCIDENTAL OR CONSEQUENTIAL DAMAGES HOWSOEVER CAUSED RESULTING FROM BREACH OF WARRANTY OR CONDITION OR UNDER ANY OTHER LEGAL THEORY, INCLUDING BUT NOT LIMITED TO LOSS OF USE. THE FOREGOING LIMITATION SHALL NOT APPLY TO DEATH OR PERSONAL INJURY CLAIMS, OR ANY STATUTORY LIABILITY FOR INTENTIONAL AND GROSS NEGLIGENT ACTS AND/OR OMISSIONS. SOME STATES DO NOT ALLOW THE EXCLUSION OR LIMITATION OF INCIDENTAL OR CONSEQUENTIAL DAMAGES, OR LIMITATIONS ON HOW LONG AN IMPLIED WARRANTY LASTS, SO THESE LIMITATIONS MIGHT NOT APPLY TO YOU.