

pinkfong BABY SHARK™

Tummy Time Undersea Play Mat

USER MANUAL

Age: 3m+

nickelodeon



© Smart Study Co., Ltd. All Rights Reserved. Pinkfong™ and Baby Shark™ are trademarks of Smart Study Co., Ltd., registered or pending rights worldwide.
© 2020 Viacom International Inc. All Rights Reserved. Nickelodeon is a trademark of Viacom International Inc.



WowWee Group Limited.

Energy Plaza, 301A-C, 92 Granville Road T.S.T. East, Hong Kong

WowWee Canada Inc.

3700 Saint Patrick Street, Suite 206, Montreal QC, H4E 1A2, Canada

Consumer Service:

<https://support.wowwee.com>

INTRODUCTION

Thank you for purchasing the Pinkfong® Baby Shark™ Tummy Time Undersea Play Mat!

Based on the global song sensation with over 5 billion views, this early development toy helps to build your baby's strength and balance as they crawl over the different surfaces and play with Baby Shark™ and friends. The Tummy Time Undersea Play Mat is easy to inflate, deflate and pack away. Simply inflate the outer ring with air and fill the interior section with water using the valves located on the back. Your baby can develop hand-eye coordination and sensory skills as they pat and point to the different floating foam characters, including Baby Shark, Mommy Shark, Daddy Shark, Grandma Shark, Grandpa Shark and William the Fish.

Take a few minutes to review this user manual before you start playing!

OVERVIEW

Package Contents: 1 x Tummy Time Undersea Play Mat;
1 x User Manual



NOTE: 6 x foam characters permanently reside in the middle section. Once filled with water, the foam characters float around!

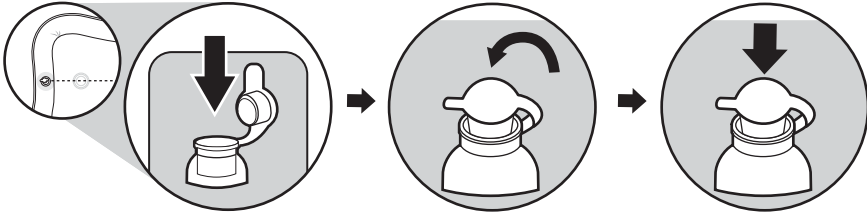
Take note of the following when playing with your Pinkfong® Baby Shark™ Tummy Time Undersea Play Mat:

- Do not submerge the Baby Shark™ Tummy Time Undersea Play Mat in water.
- As a best practice, we recommend tying up any loose hair when playing with the Baby Shark™ Tummy Time Undersea Play Mat.
- Do not use sharp objects on or around the Baby Shark™ Tummy Time Undersea Play Mat.

HOW TO USE

To fill your Tummy Time Undersea Play Mat:

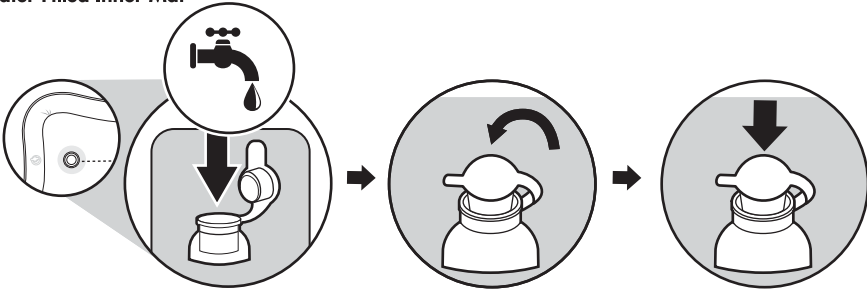
Inflatable Outer Ring



On the back of the mat, open the small Air Valve on the outer rim and inflate the frame of the mat with air. Close the valve when finished. Do not over-inflate.

Note: Can be inflated by mouth or with pump (not included).

Water Filled Inner Mat



On the back of the mat, open the inner Water Valve and fill the interior part of the mat with water from a tap. Close the valve when finished.

Tip: Can be filled with more or less water for desired effect.

When not in use, drain the water and allow the mat to air dry. Once dry, fold and store in a cool and dry place.

VISIT BABYSHARK.WOWWEE.COM
TO CHECK OUT OTHER OFFICIAL PINKFONG® BABY SHARK™ TOYS!

Manufactured and distributed by WowWee Group Limited. © Smart Study Co., Ltd. All Rights Reserved. Pinkfong™ and Baby Shark™ are trademarks of Smart Study Co., Ltd., registered or pending rights worldwide. © 2020 Viacom International Inc. All Rights Reserved. Nickelodeon is a trademark of Viacom International Inc. Patent pending.

Customer Service Website: <https://support.wowwee.com>

We recommend that you retain our address for future reference.

Product and colors may vary.

Adult assembly required.

Adult supervision required.

Packaging printed in China

CAN ICES-3(B)/NMB-3(B)

MADE IN CHINA

For full list of inputs, please visit <http://wowwee.com/babyspark>

For warranty information, please visit <http://wowwee.com/information/warranty>